

# MapStream v3.0 – Installation Guide

## Requirements:

- Operating system: Windows;
- QGIS recommended version: from 3.16.11 to 3.44;

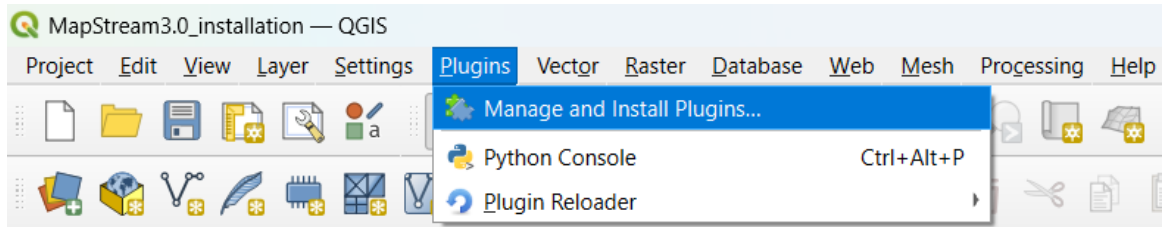
The MapStream 3.0 version has been updated in order to be able to communicate via Bluetooth using the BLE (Bluetooth Low Energy) technology of the latest rangefinder models.

**TIP:** For a better visualization, it's recommended to set the display resolution settings to *1920 x 1080*, and scale to *125%*.

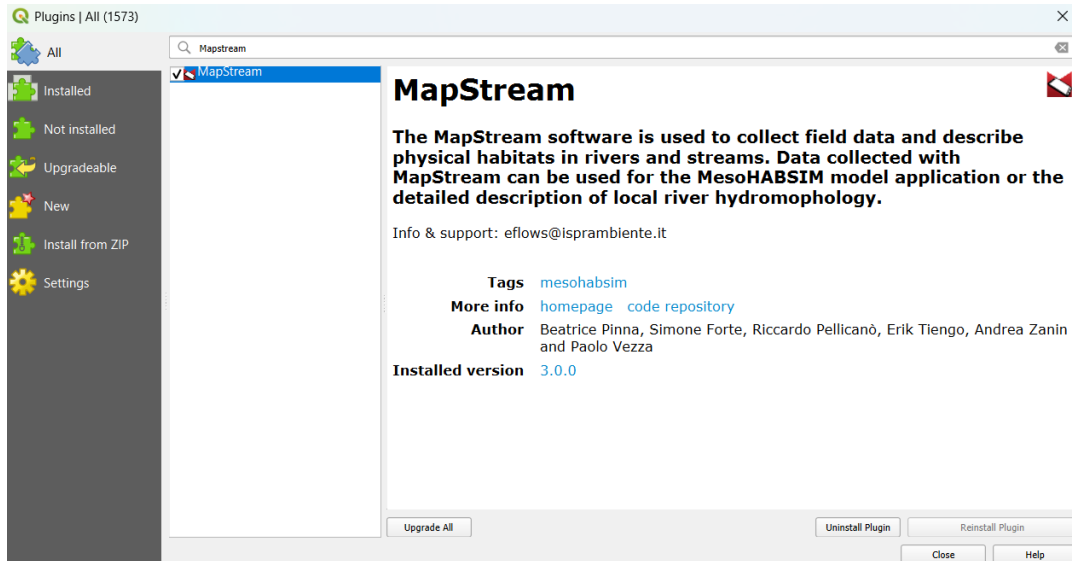
MapStream installation procedure can be automatic or manual.

## **Automatic installation procedure:**

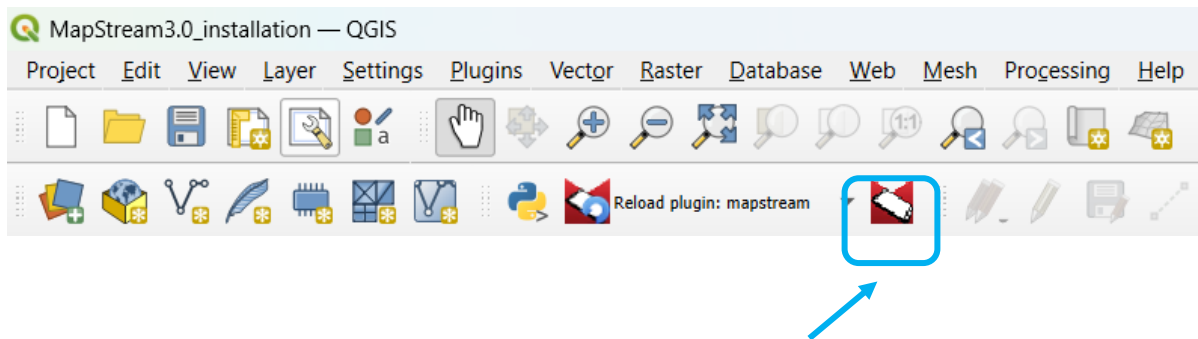
- 1) Download the QGIS software here <https://www.qgis.org/it/site/forusers/download.html> or select a specific release version here <http://download.osgeo.org/qgis/windows> and always chose the Online (OSGeo4W) installer option;
- 2) The QGIS installation automatically creates the folder 'OSGeo4W' in the Windows Users directory (C:\OSGeo4W); make sure that your QGIS folder is not located in another directory;
- 3) Unzip the "mapstream3.0\_installation.zip" archive;
- 4) Select the installation file , open the *Properties* tab of the "install\_mapstream3.0-qgis3.xx.bat" installation file and if necessary, check the *Unblock* checkbox at the bottom of the window;
- 5) Right click on the "install\_mapstream3.0-qgis3.xx.bat" installation file and select the option *Run as Administrator*;
- 6) During the installation the QGIS software must be closed;
- 7) Once the installation procedure is finished, start QGIS and click on the main menu the *Plugins* voice and select *Manage and install plugins*;



8) Select and flag the *MapStream* plugin;



9) Close the plugin management window and the *MapStream* icon will appear on the QGIS toolbar;



10) Now you can open the plugin and start your hydromorphological survey.

### **Manual installation procedure:**

1) Close the QGIS software;

2) Open the *OSGeo4W* folder. This folder will likely be located at the following path:  
*C:\OSGeo4W*, or at the path chosen during the QGIS installation;

3) Inside this folder, look for the OSGeo4W.bat file (File Batch Windows) and run the OSGeo4W shell;

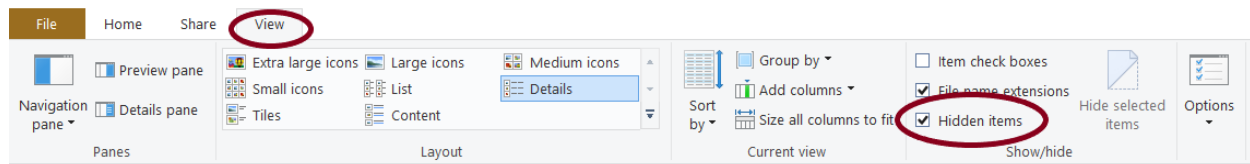
4) Still from shell, install the python modules by running the following commands:

- *pip install bleak*
- *pip install asyncio*
- *pip install dbfread*
- *pip install pandas*

5) Look for the QGIS3 plugins folder in the path:

*C:\Users\\*USERNAME\*\AppData\Roaming\QGIS\QGIS3\profiles\default\python\plugins*

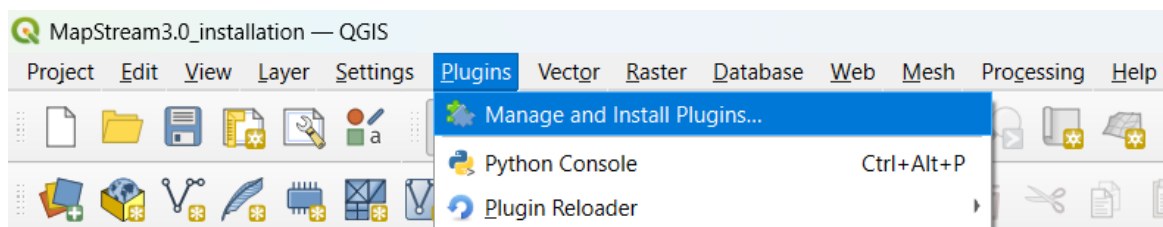
If the *AppData* folder is not visible, select the *Hidden Items* option from the *View* toolbar of the File Explorer;



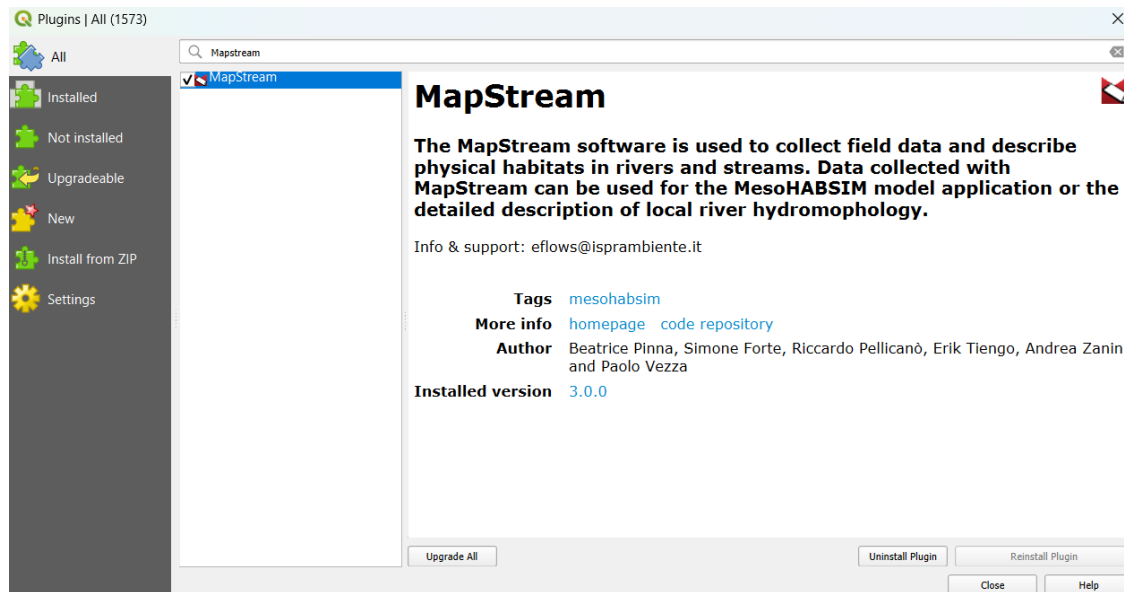
6) If the plugins folder is not present, create a new folder renamed *plugins* in the path above;

7) Copy and Paste the folder *MapStream* from the .zip folder of *MapStream 3.0.zip* to the *plugins* folder.

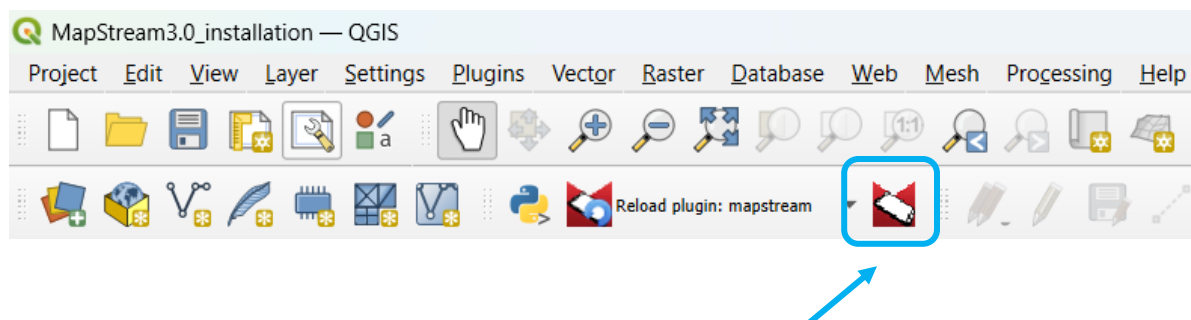
8) Start QGIS and click on the main menu the *Plugins* voice and select *Manage and install plugins*;



9) Select and flag the *MapStream* plugin;



10) Close the plugin management window and the *MapStream* icon will appear on the QGIS toolbar;



For any inquiries and technical issues please contact the MesoHABSIM development team ([eflows@isprambiente.it](mailto:eflows@isprambiente.it)).